



# 2018 PCDE

**13 & 14 APRIL**

15<sup>th</sup> International  
Primary Care  
**Diabetes**  
Europe Conference

**SPONSORSHIP OPPORTUNITIES**

Barcelona

**13 & 14 APRIL**

15<sup>th</sup> International Primary Care  
**Diabetes** Europe Conference

**2018** Barcelona  
**PCDE**  
primary care diabetes europe

## Welcome

PCDE is delighted to invite you to the 15th PCDE International Conference taking place Friday 13 and Saturday 14 April 2018 in Barcelona (Spain). This unique (biennial) meeting is organized by primary care professionals for clinicians and scientists working in the primary care field as well.

The actual and rapid evolutions in contemporary diabetes care make continued professional learning inevitable. Cure and care towards people living with diabetes becomes more personalized and increasingly complex.

Today, a pro-active multidisciplinary team approach is desirable for optimal care towards people suffering from chronic conditions such as diabetes. These people need to be prepared for adapting their lifestyle and need to be activated for adhering shared decisions. This is rather challenging for professionals working in the primary care area.

The scope of the meeting comprises a broad range of topics about various aspects of cure and care for people living with diabetes, relevant for all primary health care practitioners and will present an opportunity to share and discuss the latest state of the art knowledge in the field.

The scientific program will feature keynote lectures and state of the art sessions from international experts. The detailed scientific program will be published in due course on PCDE websites, PCD Journal, etc.

Participants to the conference will have the opportunity to present and share their experience and research results during interactive poster sessions while the top 5 selected posters will be presented in a plenary session as well.

In a special "rising star session" a young promising researcher in the field of primary care diabetes will be honoured to present his promising research, while the 8th "Paul Cromme lecture" will award a European celebrity or organisation, active in primary care and diabetes.

We look forward to welcoming you to Barcelona

Xavier Cos  
Chair PCDE

Pinar Topsever  
Vice Chair

Conference secretariat:



CONGRESOS  
Y EDICIONES  
**SEMFYC**

Carrer del Pi, 11, 2<sup>a</sup> pl., of. 13  
08002 Barcelona  
Tel. 93 317 71 29  
congresos@semfyc.es

**PCDE**  
primary care diabetes europe

**13 & 14 APRIL**

15<sup>th</sup> International Primary Care  
**Diabetes** Europe Conference

**2018** Barcelona  
**PCDE**  
primary care diabetes europe

## General Information

- PCDE Website / Twitter account



[www.pcdeurope.org](http://www.pcdeurope.org)

@pcdeurope

- Primary Care Diabetes Journal (on-line)

[www.primary-care-diabetes.com/](http://www.primary-care-diabetes.com/)

- Past stand alone international conferences

14<sup>th</sup> International Conference

29-30 April 2016, Barcelona

Theme: *Personalized care in daily practice*



13<sup>th</sup> International Conference

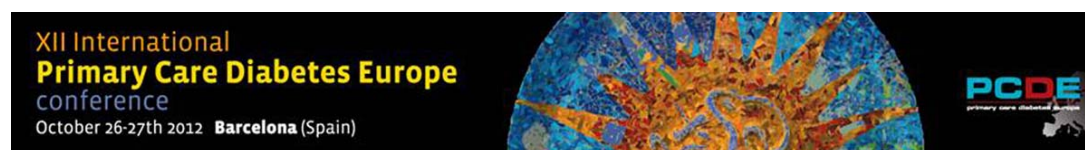
23-24 May 2014, Barcelona

Theme: *Diabetes education in multimorbidity and hypoglycaemic management*



12<sup>th</sup> International Conference

26-27 October 2012, Barcelona



Conference secretariat:



**13 & 14 APRIL**

15<sup>th</sup> International Primary Care  
**Diabetes** Europe Conference

**2018** Barcelona  
**PCDE**  
primary care diabetes europe

## Facts & Figures 2016 PCDE Conference



**300 attendees**

**30 speakers**



**28 countries**

**10 sessions  
& 3 symposia**



**CME accredited**

**Rated 8,27  
by attendees**



Conference secretariat:



CONGRESOS  
Y EDICIONES  
**SEMFYC**

Carrer del Pi, 11, 2.<sup>a</sup> pl., of. 13  
08002 Barcelona  
Tel. 93 317 71 29  
congresos@semfyc.es

**PCDE**  
primary care diabetes europe

**13 & 14 APRIL**

15<sup>th</sup> International Primary Care  
**Diabetes** Europe Conference

**20** Barcelona  
**18**  
**PCDE**  
primary care diabetes europe

## PCDE Board members

### Chair:

Assoc. Prof. Dr. Xavier Cos (Spain)

### Vice Chair:

Prof. Dr. Pinar Topsever (Turkey)

### Executive Boardmembers:

Prof. Dr. Luc Martinez (France) - Treasurer

Dr. Samuel Seidu (UK) - Research

Dr. Gerardo Medea (Italy)

### Working Group Members:

Prof. Dr. Johan Wens (Belgium)

Mrs. Guusje Neijens (Netherlands)

Prof. Imre Rurik (Hungary)

Dr. Martin Hadley-Brown (UK)

### Operational Manager:

Mrs. Ottilia Hoogslag (Netherlands)

Contact: [secretary@pcdeurope.org](mailto:secretary@pcdeurope.org)

### Conference secretariat:

Congresos y Ediciones semFYC (Spain)

Contact: [congresos@semfyc.es](mailto:congresos@semfyc.es)

### Conference secretariat:



Carrer del Pi, 11, 2.<sup>a</sup> pl., of. 13  
08002 Barcelona  
Tel. 93 317 71 29  
[congresos@semfyc.es](mailto:congresos@semfyc.es)



**13 & 14 APRIL**

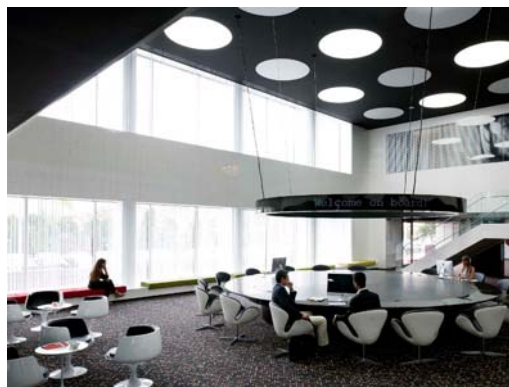
15<sup>th</sup> International Primary Care  
**Diabetes** Europe Conference

**20** Barcelona  
**18**  
**PCDE**  
primary care diabetes europe

**Venue: Barceló Sants Hotel 4\*, Barcelona (to be confirmed)**

The new **Barceló Sants\*\*\*\*** hotel is now ready and totally renovated. Prepare to enjoy a different type of trip in the renovated, avant-garde style Orbital Rooms. Situated above Sants station, the hotel has **direct access to the AVE**, to the metro lines and the **Barcelona railway**. This unrivalled location provides guests easy access to both the city of Barcelona and also to the surrounding area. It is the best connected hotel in the city.

It is also ideal for **business trips** thanks to its direct links to the airport. There is also 3,000 m2 divided into 14 function rooms for events and conferences, a showroom for exhibiting vehicles and large scale products with capacity for up to 1,500 people. Also worth highlighting is its close proximity to the **Barcelona and Montjuic Trade Fair and Congress Palace**, the 200 parking spaces, free **Wi-Fi service**, the **Orbital Bar** and the excellent cuisine served in its restaurants.



Conference secretariat:

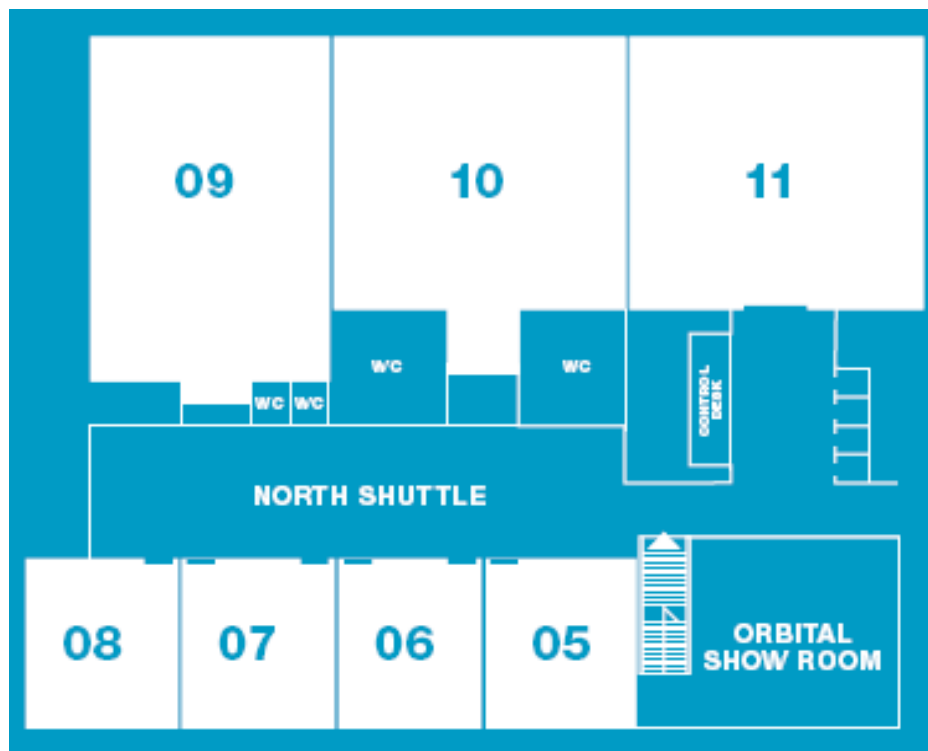


CONGRESOS  
Y EDICIONES  
**SEMFYC**

Carrer del Pi, 11, 2.<sup>a</sup> pl., of. 13  
08002 Barcelona  
Tel. 93 317 71 29  
congresos@semfyc.es

**PCDE**  
primary care diabetes europe

### First Floor



Plenary Meeting Room: MR 09

Poster area: MR 10

Symposia Meeting Rooms: MR 05+06/ MR 07+08

Central courtyard ("North Shuttle" Foyer): exhibition area

Room	Surface m2	Lenght m.	Width m.	Height m.	Capacity (Theater) pax.	Capacity (Cabaret) pax.
MR 09	358	15,8	22,5	3,25	250	-
MR 10	373	20,2	17,7	3,25	300	140
Foyer	290	34	8,5	3,0	-	-
MR 05+06, MR 07+08	205	10,9	19,0	3,1	140	70
MR 07	107	10,9	10,1	3,1	50	-

Conference secretariat:



CONGRESOS  
Y EDICIONES  
SEMFYC

Carrer del Pi, 11, 2.<sup>a</sup> pl., of. 13  
08002 Barcelona  
Tel. 93 317 71 29  
congresos@semfyc.es

**SPONSORSHIP PACKAGES****1.- Pre-Conference Sponsorship**

- 12m<sup>2</sup> in the exhibition area:
  - o 6 x 2 m (max. height 3m) designer stand (space and electrical connection only)
- 1 Pre-Conference Satellite Symposium (Option 0.B - see *Satellite Symposia section*)
- Exclusivity for Symposium on the day before the Conference
- Meeting room will be equipped with the audio visuals (computer, screen, projector and PA system)
- Free speakers' registrations
- Promotion of the Symposia in all PCDE's communications (incl. logo and PCDE endorsement)
- Insertion of 1 document (card or brochure) in the conference participant's folder
- Logo on conference website (sponsor's page)
- Special rates for all registrations: *Early Bird* rate until conference

Pre-Conference Sponsorship price is €30.000 + VAT (21%) \*

**2.- Exclusive Sponsorship**

- 6m<sup>2</sup> in the exhibition area:
  - o 3 x 2 m (max. height 3m) designer stand (space and electrical connection only)
- 1 Satellite Symposium in premium time slot during the Conference (90/120 min., Option 1.C or 1.D - see *Satellite Symposia section*)
- Promotion of the Symposia in all PCDE's communications (incl. logo and PCDE endorsement)
- Insertion of 1 document (card or brochure) in the conference participant's folder
- Logo on conference website (sponsor's page)
- Special rates for all registrations: *Early Bird* rate until conference

Exclusive Sponsorship price is €23.000 + VAT (21%) \*

**3.- Premium Sponsorship**

- 6m<sup>2</sup> in the trade exhibition:
  - o 3 x 2 m (maximum height 3m) designer stand (space and electrical connection only)
- 1 Breakfast Satellite Symposium during the Conference (60 min., Option 1.A or 2.A - see *Satellite Symposia section*)
- Promotion of the Symposia in all PCDE's communications (incl. logo and PCDE endorsement)
- Insertion of 1 document (card or brochure) in the conference participant's folder.
- Logo on conference website (sponsor's page)
- Special rates for all registrations: *Early Bird* rate until conference

Premium Sponsorship price is €18.000 + VAT (21%) \*

Conference secretariat:



CONGRESOS  
Y EDICIONES  
**SEMFYC**

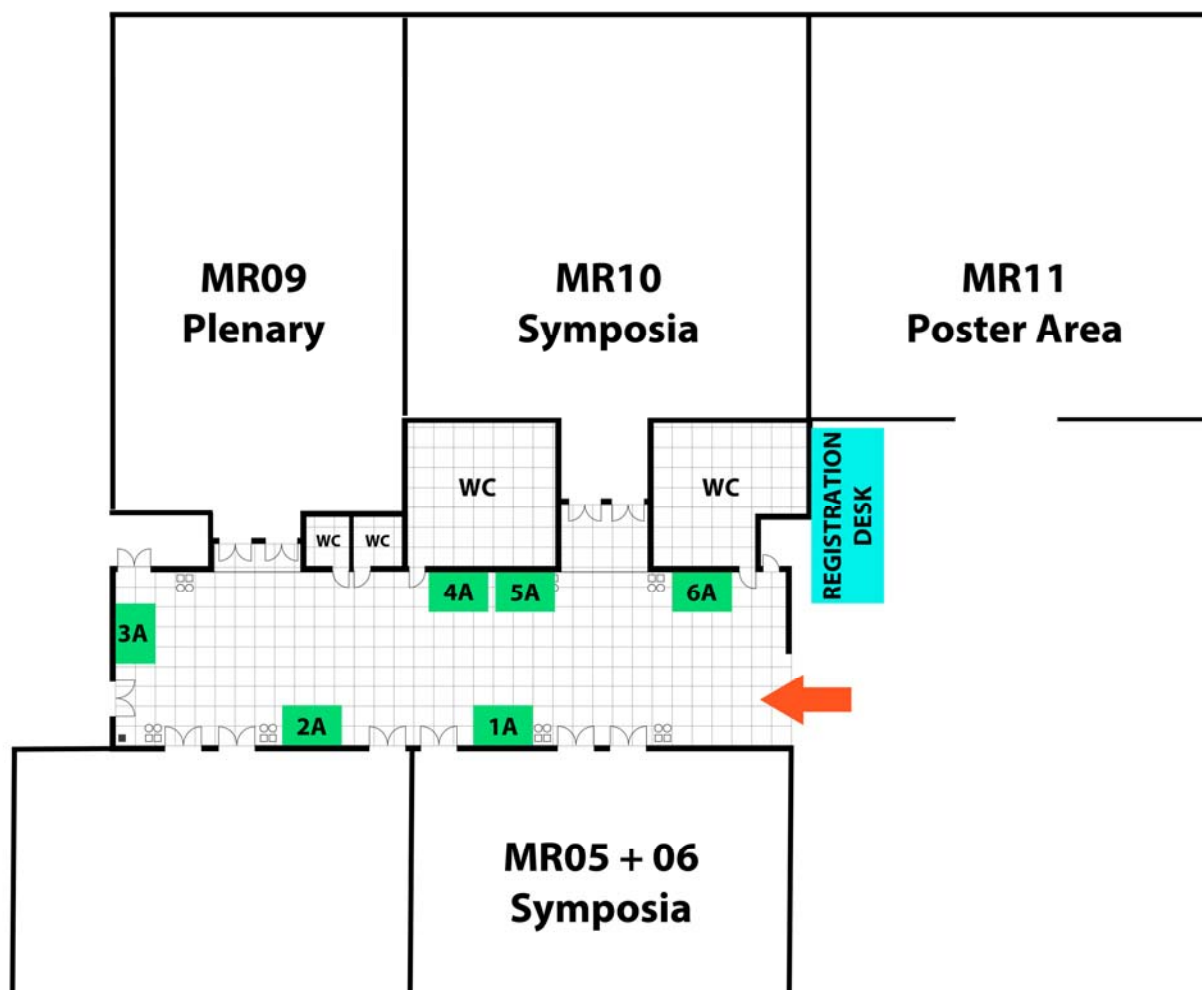
Carrer del Pi, 11, 2.<sup>a</sup> pl., of. 13  
08002 Barcelona  
Tel. 93 317 71 29  
congresos@semfyc.es

**PCDE**  
primary care diabetes europe



## ALTERNATIVE SPONSORSHIP

### 1-. Exhibition Area



- Booth 6m<sup>2</sup> (1A, 2A, 3A or 6A): €4.000 + VAT (21%) \*
- Booth 12m<sup>2</sup> (4A + 5A): €6.500 + VAT (21%) \*

Conference secretariat:



CONGRESOS  
Y EDICIONES  
SEMFYC

Carrer del Pi, 11, 2.<sup>a</sup> pl., of. 13  
08002 Barcelona  
Tel. 93 317 71 29  
congresos@semfyc.es

**PCDE**  
primary care diabetes europe

## 2-. Satellite Symposia

Available time slots for Symposia:

### ➤ **PRE-CONFERENCE**

**Option 0.A:** Afternoon Symposium 17.00 - 19.00 in MR10 for up to 140 delegates.  
120 minutes timeslot for afternoon satellite symposium. <sup>(1)</sup>

**Price: €21.000 + VAT (21%) \***

**Option 0.B:** Afternoon Symposium 17.00 - 19.00 in MR09 for up to 200 delegates.  
120 minutes timeslot for afternoon satellite symposium. <sup>(1)</sup>

**Price: €25.000 + VAT (21%) \***

### ➤ **DAY 1**

**Option 1.A:** Breakfast Symposium 08.00 - 09.00 in MR05+06 for up to 70 delegates.  
60 minutes timeslot for breakfast satellite symposium, including breakfast served in the meeting room.

**Price: €14.000 + VAT (21%) \***

**Option 1.B:** Lunch Symposium 13.00 - 14.30 in MR10 for up to 140 delegates.  
90 minutes timeslot for lunch satellite symposium, including finger food lunch served in the meeting room.

**Price: €24.500 + VAT (21%) \***

**Option 1.C:** Afternoon Symposium 17.00 - 18.30 in MR10 for up to 140 delegates.  
90 minutes timeslot for afternoon satellite symposium.

**Price: €19.500 + VAT (21%) \***

**Option 1.D:** Afternoon Symposium 17.00 - 19.00 in MR10 for up to 140 delegates.  
120 minutes timeslot for afternoon satellite symposium.

**Price: €21.000 + VAT (21%) \***

### ➤ **DAY 2**

**Option 2.A:** Breakfast Symposium 08.00 - 09.00 in MR05+06 for up to 70 delegates.  
60 minutes timeslot for breakfast satellite symposium, including breakfast served in the meeting room.

**Price: €14.000 + VAT (21%) \***

**Option 2.B:** Breakfast Symposium 07.30 - 09.00  
90 minutes timeslot for breakfast satellite symposium, including breakfast served in the meeting room.

**Price: €15.500 + VAT (21%) \***

All Symposia include:

- Meeting room in cabaret style for up to 70 pers (MR05+06)/140 pers (MR10).
- Exclusivity (no parallel sessions)
- The room will be equipped with the audio visuals (computer, screen, projector and PA system)
- Free registration for session speakers

<sup>(1)</sup> Afternoon Symposia: optionally, a drinks reception can be served

Conference secretariat:



CONGRESOS  
Y EDICIONES  
**SEMFYC**

Carrer del Pi, 11, 2.<sup>a</sup> pl., of. 13  
08002 Barcelona  
Tel. 93 317 71 29  
congresos@semfyc.es

**PCDE**  
primary care diabetes europe

### 3.- Conference Participant´s Bag

- Sponsor logo on the cover of the Conference bag

Price: €4.500 + VAT (21%) \*

### 4.- Conference Participant´s Lanyard

- Sponsor logo to be printed on attendees' lanyards

Price: €2.500 + VAT (21%) \*

### 5.- Bag insert

- Insertion of one document (brochure/card) in the Conference bag

Price: €1.000 + VAT (21%) \*

### 6.- Webcasting of the Conference

- Recording all official scientific sessions of the Conference in the plenary meeting room & video edition (webcast). The webcast will be uploaded on a virtual platform and linked to either the Conference- or sponsor website

Price: €7.500 + VAT (21%) \*

### 7.- Corporate advertisement within the Conference book

- Corporate advertisement inside the final Conference programme book (full page, not on cover pages)

Price: €2.500 + VAT (21%) \*

### 8.- Banners & signalling

- Corporate advertisement on two roll-up banners in the Conference venue

Price: €2.500 + VAT (21%) \*

### 9.- Wifi center and internet booths

Price: €5.500 + VAT (21%) \*

Conference secretariat:



CONGRESOS  
Y EDICIONES  
**SEMFYC**

Carrer del Pi, 11, 2.<sup>a</sup> pl., of. 13  
08002 Barcelona  
Tel. 93 317 71 29  
congresos@semfyc.es

**PCDE**  
primary care diabetes europe

**13 & 14 APRIL**

15<sup>th</sup> International Primary Care  
**Diabetes** Europe Conference

**20** Barcelona  
**18**  
**PCDE**  
primary care diabetes europe

### 10.- Simultaneous translation

- Simultaneous translation booth, one-language interpreter and 200 headsets

Price: €4.500 + VAT (21%) \*

### 11.- Educational videos

Please contact the secretariat

These suggestions can be tailored and changed by mutual agreement.

*\* The VAT valid at the time of billing the services will be applied*

Conference secretariat:



CONGRESOS  
Y EDICIONES  
**SEMFYC**

Carrer del Pi, 11, 2.<sup>a</sup> pl., of. 13  
08002 Barcelona  
Tel. 93 317 71 29  
congresos@semfyc.es

**PCDE**  
primary care diabetes europe



**13 & 14 APRIL**

15<sup>th</sup> International Primary Care  
**Diabetes** Europe Conference

**20  
18**

Barcelona

**PCDE**

primary care diabetes europe

## REGISTRATION

Registration rates in Euro (€), 21% VAT included\*.

	Super Early Bird <i>Till 1 December 2017</i>	Early bird <i>From 2 Dec. to 1 Feb. 2018</i>	Regular fee <i>From 2 Feb. 2018 to 5 April</i>	On site fee <i>From 6 April</i>
Delegates	240,00	295,00	375,00	475,00
PCDE Direct members	240,00	295,00	295,00	375,00
Junior Dr, trainees	240,00	240,00	240,00	295,00

\* The VAT valid at the time of billing the services will be applied

Special rates for group registrations:

+20 delegates: 5% discount

+50 delegates: 10% discount

+100 delegates: 15% discount or Early Bird fee at any time

Registration fee for Primary Care Diabetes Europe direct members, delegates, junior doctors and trainees includes:

- Admission to all scientific sessions
- Admission to poster exhibition and commercial exhibition
- Conference materials (delegate's bag, abstract book, etc.)
- Coffee breaks, lunch and reception in the conference area

Conference secretariat:



CONGRESOS  
Y EDICIONES  
**SEMFYC**

Carrer del Pi, 11, 2.<sup>a</sup> pl., of. 13  
08002 Barcelona  
Tel. 93 317 71 29  
congresos@semfyc.es

**PCDE**  
primary care diabetes europe



**13 & 14 APRIL**

15<sup>th</sup> International Primary Care  
**Diabetes** Europe Conference

**20** Barcelona  
**18**  
**PCDE**  
primary care diabetes europe

## SPONSORSHIP APPLICATION FORM

Company \_\_\_\_\_

VAT no. \_\_\_\_\_

Address \_\_\_\_\_

City \_\_\_\_\_ Postcode: \_\_\_\_\_

Country \_\_\_\_\_

Contact person \_\_\_\_\_

Tel. \_\_\_\_\_ Mobile \_\_\_\_\_ Email \_\_\_\_\_

Please indicate the option desired:

<input type="checkbox"/> Pre-Conference sponsorship	<input type="checkbox"/> Number of symposia	<input type="checkbox"/> Booth number
<input type="checkbox"/> Exclusive sponsorship	<input type="checkbox"/> Number of symposia	<input type="checkbox"/> Booth number
<input type="checkbox"/> Premium sponsorship	<input type="checkbox"/> Number of symposia	<input type="checkbox"/> Booth number

Other sponsorship activities:

1. \_\_\_\_\_

2. \_\_\_\_\_

3. \_\_\_\_\_

Signature and stamp

Signed \_\_\_\_\_

\_\_\_\_\_, on \_\_\_\_\_, 20\_\_

Note: By sending this form, the applicant accepts the rules and conditions detailed in the *Information Dossier for Cooperation*.

Please send this form by email to [congresos@semfyc.es](mailto:congresos@semfyc.es)

Conference secretariat:



CONGRESOS  
Y EDICIONES  
**SEMFYC**

Carrer del Pi, 11, 2.<sup>a</sup> pl., of. 13  
08002 Barcelona  
Tel. 93 317 71 29  
congresos@semfyc.es

**PCDE**  
primary care diabetes europe

